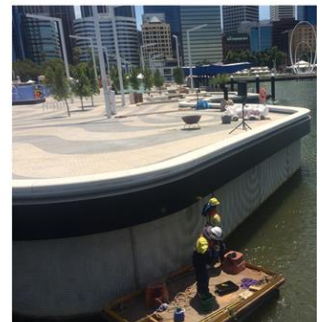


# Project Case Study



## Elizabeth Quay – Fabrication and Installation of Steelwork and MSCL

End User	Metropolitan Redevelopment Authority (MRA)
Client	CPB Contractors (Leighton Contractors)
Location	Perth, WA
Market Sector	Government



### Scope of Work:

Alltype Engineering was awarded the contract to supply, fabricate and install Mild Steel Cement Lined (MSCL) pipe around the Elizabeth Quay Inlet to redirect Water Corporation assets as part of the project construction requirements.

Works were completed Quay side and in coordination with numerous contractors and stakeholders.

AS/NZS ISO 9001  
AS/NZS 4801

BUREAU VERITAS  
Certification

